

PLANT SALE PREPARATIONS for September 24th, 2016:

If you are a newcomer to our group, you will be surprised at the diversity, number of rarities, and size of our two yearly plant sales. They are one of the best things about being a chapter member, and offer the opportunity to get wonderful and unusual plants at very reasonable prices. Also, the sale is very important to the chapter, as it raises the funds for our excellent speaker program. But because of the size of the sale, we do need to have people try to follow certain rules to make the sale run smoothly and quickly.

The first thing is to start now thinking about what you will propagate and get ready for the sale. Then:

At home:

- 1). Please try to pot or repot plants at least ten days before the sale. Otherwise, the plants may look ragged.
- 2). Please select appropriate plants for the sale. Interesting and unusual alpiners, woodland plants, and small woody plants are ideal. No large, common woody plants, annuals, common perennials, and tropicals, please.
- 3). Before you bring the plants, label each pot, with the name of the plant [scientific name, if known, and cultivar or variety, if known]. On the back of the label put your name and the year. This allows people both at the sale or later to ask you about the plant. It also helps us when setting up the sale to talk to you if, for example, you have missed putting a price on the plant.
- 4). We ask people to price their own plants, and you can price your plants at home, if you like, but please use a separate price label. The price labels are pulled out of the pots by the cashier to expedite adding up the total.

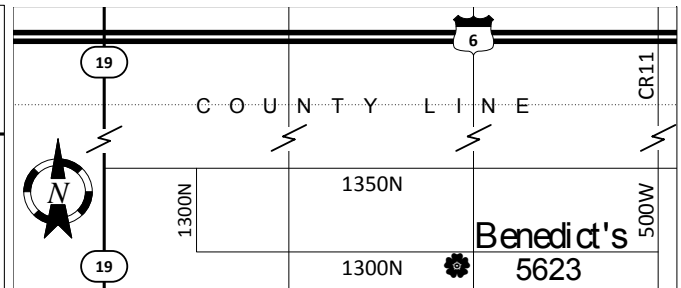
At the sale:

- 1) If you have not priced your plants at home, please use the chapter price labels provided to price each pot. Prices range from \$2 to \$6, but mostly are within the \$2 to \$4 range. Set your plants as close together as possible on the selling tables. You should try to get your plants to the sale a half-hour or so before the sale starts to get them set up and priced, if necessary. The officers will be glad to advise on appropriate pricing.
- 2) Please tell the people running the auction how many plants you brought. For every 10 plants you bring, you earn one Red Label. Each Red Label entitles you to one "First Pick." This means that those who did not bring plants must stand back and wait for those with Red Labels to make their First Picks. The time for First Pickers to make their choices is limited to 3-5 minutes depending upon the number of First Pick labels given out. Keep in mind that you still have to pay for the plants.
- 3) Please let us know if you think you might have brought a plant or plants that you think might be of "Auction Quality." These are normally a) exceptionally rare and desirable plants not available commercially, b) plants available only at a very high cost, or c) large, well-grown specimens of highly desirable plants. We try our best to keep the auctions highly selective, and if you have plants selected by the people running the auction to be auctioned, you will get an additional Red Label for each plant.

Saturday 24 September 2016
TO GET TO THE BENEDICT'S
 5623 1300N, Nappanee IN 46550 (574) 773-2254

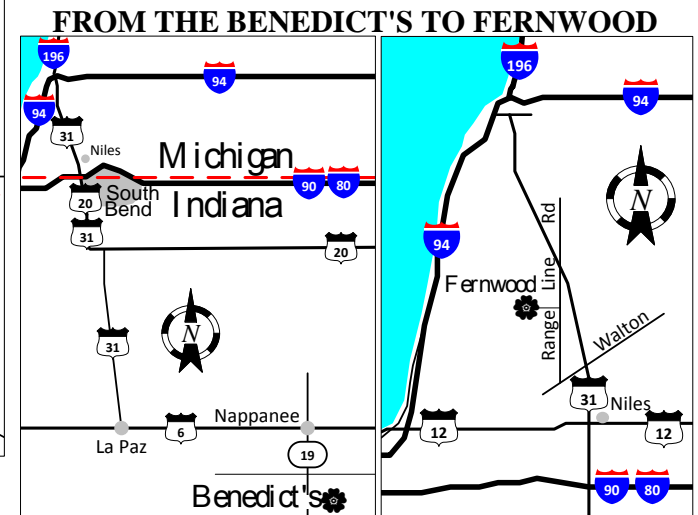
Coming from the East on I-94: Exit onto I-69 at Marshall (just East of Battle Creek). On I-69 go S toward Fort Wayne following it to US-6 (aka Grand Army of the Republic Hwy). Go W (right) on US-6 about 47 miles and immediately past the airport on your right (to the N) is County Road 11 (CR11). Turn S (left) on CR11, which becomes 500W as you cross the county line, going about 1.5 miles to 1300N. Turn W (right) onto 1300N traveling about ½ mile to Robert & Esther Benedict's Nursery to your left, on the S side. Follow the lane to the house, unload your plants in front of the garage, then go round back of the house to park in the yard where designated.

Coming from the North on US-131: As you cross into Indiana this becomes IN-13 which you'll follow to IN-4 turning W (right) toward Goshen. In Goshen take IN-15 S (left) going about 11 miles to US-6 (aka Grand Army of the Republic Hwy). Go W (right) on US-6 about 47 miles to County Road 11 (CR11) [the airport is to the N but you go S]. Turn S (left) on CR11, which becomes 500W as you cross the county line, going about 1.5 miles to 1300N. Turn W (right) onto 1300N traveling about ½ mile to Robert & Esther Benedict's Nursery to your left, on the S side. Follow the lane to the house, unload your plants in front of the garage, then go round back of the house to park in the yard where designated.



FERNWOOD

13988 Range Line Road, Niles, MI 49120 (269) 695-6491



Go W (from the drive way turn left) on 1300N following around the bend going N to 1350N. Turn W (left) onto 1350N following it to IN-19. Go N (right) on IN-19 to US-6. Go W on US-6 to US-31. Go N (right) on US-31. US-31 joins US-20, but crossing the border becomes US-31 only. Continue on US-31 toward Niles. Watch for Fernwood signs. Take Exit 7 for Walton Rd. Turn W (left) onto Walton Rd and go 1.5 mi to Range Line Rd. Turn N (right) onto Range Line Rd going 1.7 mi to Fernwood Botanical Garden & Nature Preserve, on the left.

Admission fees: Adults \$9, Seniors \$7, Children (5-17) \$4, Children 4 and under Free, & Members Free. Fernwood shares reciprocal admissions with many botanical gardens and nature centers throughout North America. If you are a member of a participating garden or nature center, you are admitted free.